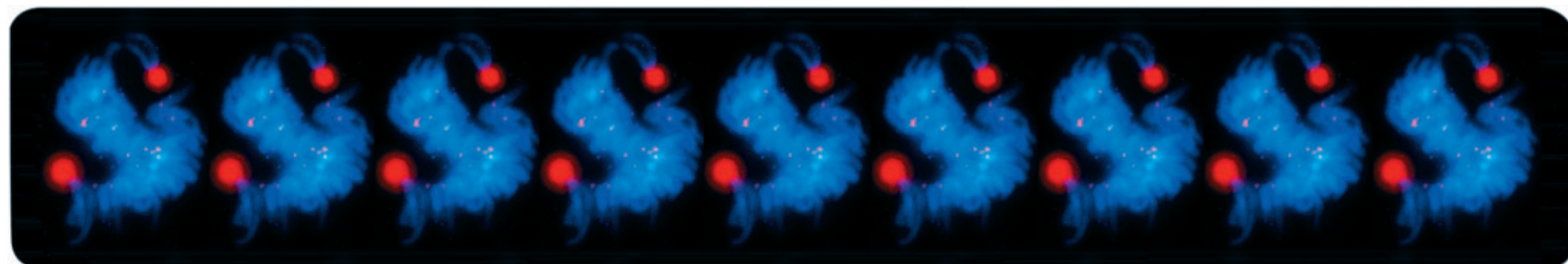


# Frontiers<sup>OF</sup> Science



## AUTUMN SEMINARS 2008

### AUGUST

#### Thursday, August 28 at 12.00

**Dr. Sharmila Bapat**, National Centre for Cell Science NCCS Complex, Pune University, India:

*"Epigenetic Mechanisms of Gene Regulation in Ovarian Cancer"*

Host: Matthias Nees (matthias.nees (at) vtt.fi)

### SEPTEMBER

#### Thursday, September 4 at 12.00

**Dr. Franz Bosch**, The Head and Neck Cancer Centre, King's College London, UK:

*"Clinical and Molecular Factors in Head and Neck Cancer"*

Host: Matthias Nees (matthias.nees (at) vtt.fi)

#### Thursday, September 11 at 12.00

**Dentalia, Arje Scheinin Auditorium**

**Prof. Paraskevi Giannakakou**, Division of Hematology and Medical Oncology, Weill Medical College of Cornell University, New York, USA:

*"Microtubule-Dependent Translation of HIF-1α:*

*New Opportunities for Cancer Therapy"*

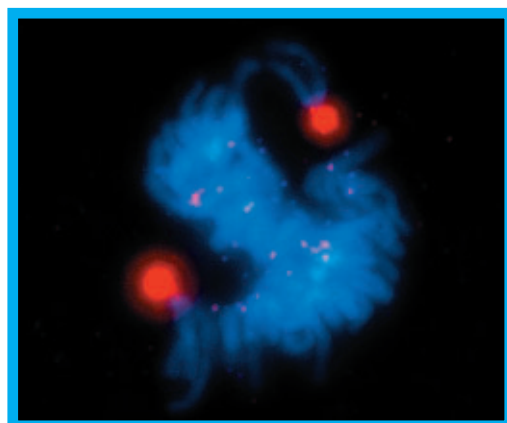
Host: Marko Kallio (marko.kallio (at) vtt.fi)

#### Thursday, September 18 at 12.00

**Prof. Juha Kere**, Karolinska Institutet, Department of Biosciences and Nutrition, Sweden:

*"Finding Genes for Complex Disorders"*

Host: Juha Peltonen (juha.peltonen (at) utu.fi)



*A mitotic HeLa cell stained with an antibody recognizing a Plk1-created phosphoepitope at the spindle poles and kinetochores (red). DNA is stained with DAPI (blue).*

### OCTOBER

#### Thursday, October 2 at 12.00

**Dr. Jochen Salfeld**, Abbott Bioresearch Center, Worcester, USA:

*"Use of New Biotechnology to Design Rational Drugs Against Newly Defined Targets"*

Host: Olli Lassila (olli.lassila (at) utu.fi)

#### Thursday, October 9 at 12.00

**Mauno Koivisto centre, lecture room**

**Prof. Tomi Mäkelä**, Institute of Biomedicine, Faculty of Medicine, Biomedicum Helsinki, Finland:

*"The LKB1 Kinase: Gastrointestinal Tumor Suppression by "Landscaping"*

Host: Riitta Lahesmaa (riitta.lahesmaa (at) btk.fi)

#### Thursday, October 23 at 12.00

**Prof. Jeffrey L. Brodsky**, Department of Biological Sciences, University of Pittsburgh, USA: *"Co-opting Yeast to Probe the Molecular Mechanisms Underlying Protein Conformational Disease"*

Host: Lea Sistonen (lea.sistonen (at) btk.fi)

### NOVEMBER

#### Thursday, November 6 at 12.00

**Dr. Jos Jonkers**, The Netherlands Cancer Institute-Antoni van Leeuwenhoek Hospital (NKI-AVL), Amsterdam, The Netherlands:

*"Conditional Mouse Models of Breast Cancer"*

Host: Jukka Westermarck (jukka.westermarck (at) uta.fi)

#### Thursday, November 13 at 12.00

**Prof. Ari Helenius**, Institute of Biochemistry, Swiss Federal Institute of Technology Zurich, Switzerland:

*"How Animal Viruses Enter Host Cells"*

Host: Timo Hyypä (timo.hyypia (at) utu.fi)

#### Thursday, November 20 at 12.00

**Dr. Susanne Lens**, Department of Medical Oncology, Laboratory of Experimental Oncology, University Medical Center Utrecht, The Netherlands: *"The Chromosomal Passenger Complex and the Control of Chromosomal Stability"*

Host: Marko Kallio (marko.kallio (at) vtt.fi)

#### FRONTIERS OF SCIENCE SEMINARS ORGANISED BY

Biomaterials Research, Center for Reproductive and Developmental Medicine, Diagnostic Technologies and Applications, Receptor Program, Systems Biology Research Program, Turku Immunology Centre, Graduate Schools participating in Turku BioNet

**ORIGINAL IMAGE BY**  
 Marko Kallio

#### TURKU BIONET SEMINAR CALENDAR

<http://www.biocity.turku.fi>

#### FURTHER INFORMATION

Tel + 358 2 333 8042

E-mail: [biocityturku@btk.fi](mailto:biocityturku@btk.fi)

[www.biocity.turku.fi](http://www.biocity.turku.fi)